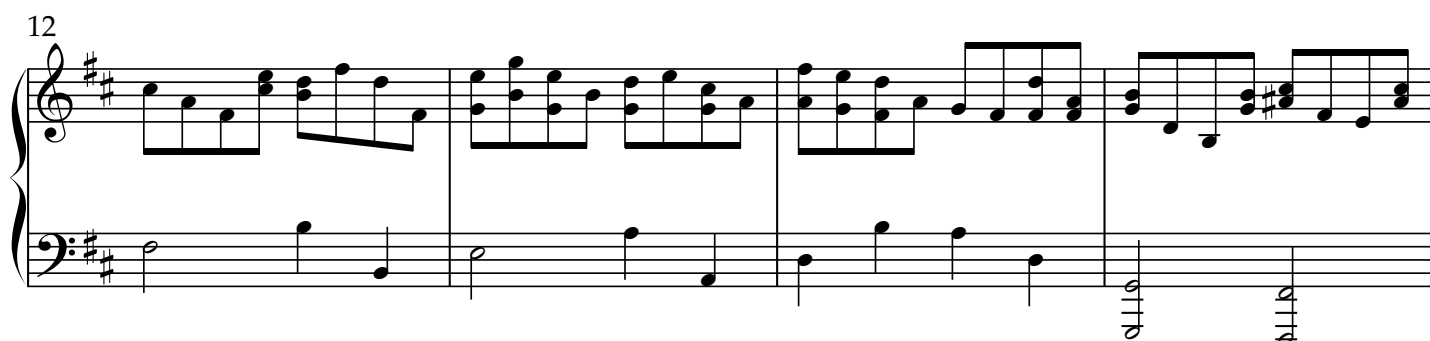
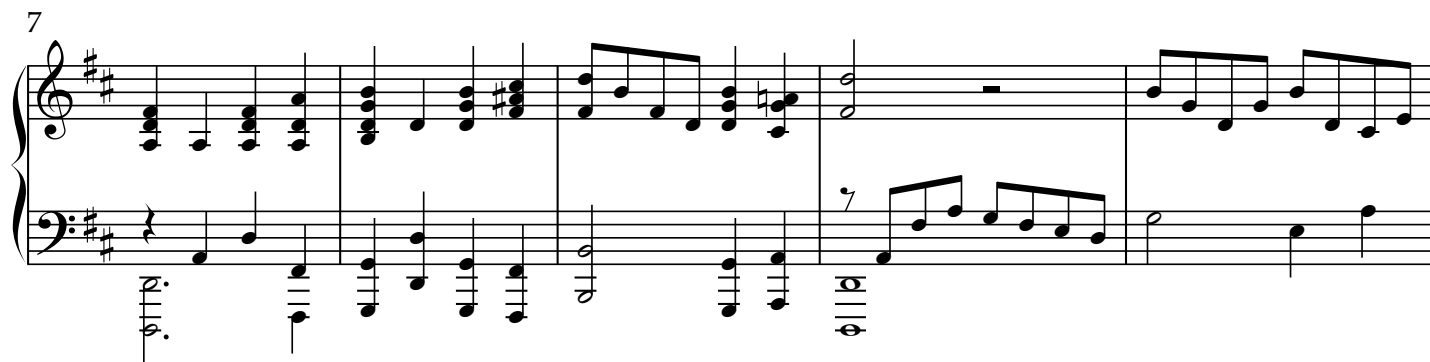
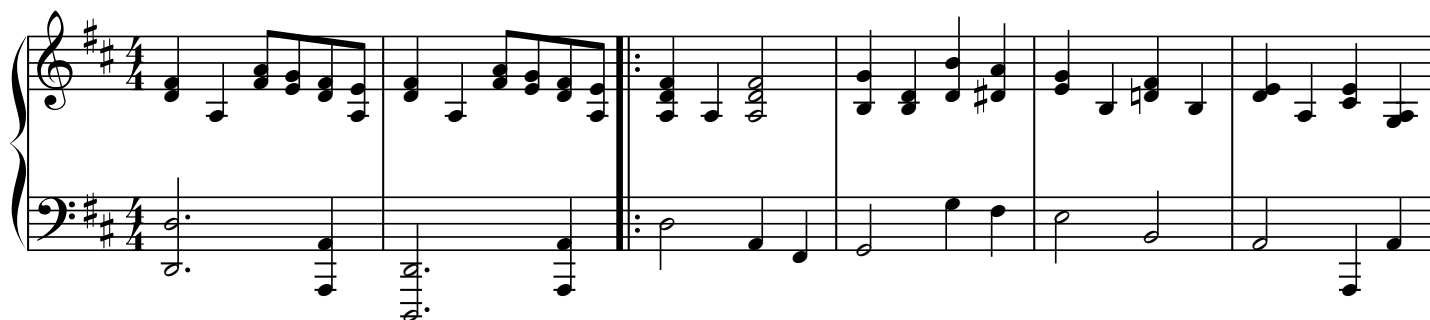


Навеки нам дана Христа любовь.

Piano

сл. и муз. Воробьев С.



20

Measures 20-24 of a piano piece. The key signature has two sharps (F# and C#). The melody in the right hand features eighth-note patterns and a descending line in measure 24. The left hand provides a steady accompaniment with chords and single notes.

25

Measures 25-29 of a piano piece. Measures 25-26 continue the previous pattern. Measures 27-28 are marked with a first ending bracket (1.) and a second ending bracket (2.). The first ending leads back to measure 25, while the second ending concludes the phrase. The left hand includes a triplet of eighth notes in measures 27 and 28.

30

Measures 30-33 of a piano piece. The melody in the right hand continues with eighth-note patterns. The left hand accompaniment remains consistent with the previous section.

34

Measures 34-38 of a piano piece. Measures 34-35 continue the previous pattern. Measures 36-37 are marked with a first ending bracket (1.) and a second ending bracket (2.). The first ending leads back to measure 34, while the second ending concludes the phrase. The left hand includes a triplet of eighth notes in measures 36 and 37.